

# Don't Fall In!

## Building A CCMR Boat That Floats!

Shauna Abrego, Angie Hargreaves,  
North East ISD





1

---

---

---

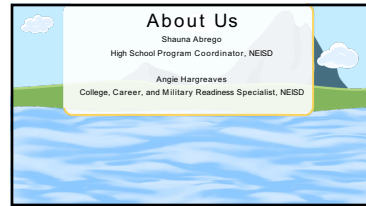
---

---

---

---

---



2

---

---

---

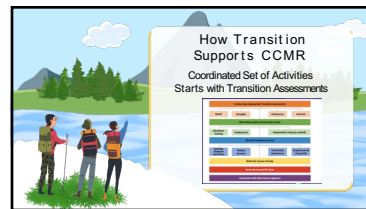
---

---

---

---

---



3

---

---

---

---

---

---

---

---



4

---

---

---

---

---

---

---

---



5

---

---

---

---

---

---

---

---



6

---

---

---

---

---

---

---

---

**Let's Talk About Roles in the Boat**

Front	Middle	Back
<ul style="list-style-type: none"> <li>In the prime splash zone</li> <li>Sees action close up</li> <li>Paddling Leaders</li> <li>Best downriver view to identify obstacles</li> </ul>	<ul style="list-style-type: none"> <li>Less chance of falling overboard</li> <li>Scout spot for nervous and scared paddlers</li> </ul>	<ul style="list-style-type: none"> <li>First person to spot if rapids</li> <li>Stays com-ands with crew</li> <li>Sees the whole view of the upcoming rapid</li> </ul>

7

---

---

---

---

---

---

---

---

**Counselor**  
What do they do?

Role in ARDs:

- Counselor Collaboration Form
- College Board Accommodations

Master Schedule

- Course cards include special education courses

Where do they sit on the boat?

8

---

---

---

---

---

---

---

---

**CTE Teacher**  
What do they do?

Collaborative Trainings  
Staffings with SPED team  
IEP Accommodations  
CTE Consideration of Removal  
CTE Teacher Input Form  
Exemplar Form

Where do they sit on the boat?

9

---

---

---

---

---

---

---

---

**Special Education Teacher**  
What do they do?

- Leads Transition Planning with a Student & Family
- Administering Transition Assessments
- Developing Postsecondary goals
- Proposing coherent sequence of courses based on goals
- Identify course(s)** identifying what supports course of study are needed to reach the postsecondary goal.

Where do they sit on the boat?

10

---

---

---

---

---

---

---

---

**Special Education District Staff**  
What do they do?

- Check Your State's Employment** to ensure courses are aligned with PSC
- General Employability Skills Pathway
- Career opportunities
- Career Readiness** providing coaching to business, teachers, and job coaches
- CCMC Training for new teachers annually

Where do they sit on the boat?

11

---

---

---

---

---

---

---

---

**CTE District Staff**  
What do they do?

- Supporting **Transition**
- Student Information**
- House 28 and Special Education
- Work with Special Education on equitable access to magnet programs, including students located at cluster sites.
- Special Education Representatives at College and Career Expo and Job Fairs
- Share information about internships, camps, and enrichment opportunities.

Where do they sit on the boat?

12

---

---

---

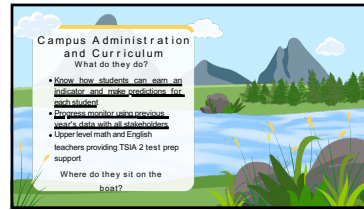
---

---

---

---

---



**Campus Administration and Curriculum**  
What do they do?

- Know how students can earn an indicator and make decisions for their future
- They work with the entire school to make sure all students have access to upper level math and English teachers providing TSA 2 test prep support.

Where do they sit on the boat?

13

---

---

---

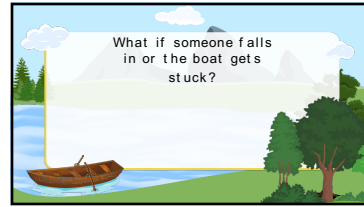
---

---

---

---

---



What if someone falls in or the boat gets stuck?

14

---

---

---

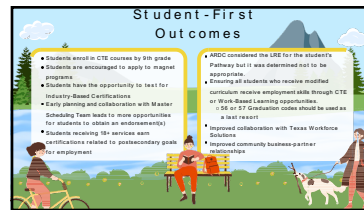
---

---

---

---

---



**Student-First Outcomes**

- Students enroll in CTE courses by 9th grade
- Students are encouraged to apply to magnet programs
- Students have the opportunity to test for Industry-Based Certifications
- Early planning and collaboration with Master Scheduling Team leads to more opportunities for students to obtain an endorsement(s)
- Students receiving 10+ service hour certifications related to postsecondary goals for employment
- AEDC considered the LMS for the students' Pathway but it was determined not to be appropriate.
- Among all students who receive modified curriculum receive employment skills through CTE or Work-Based Learning opportunities
  - 56 or 57 Graduation codes should be used as a last resort
- Improved collaboration with Texas Workforce Solutions
- Improved community business partner relationships

15

---

---

---

---

---

---

---

---